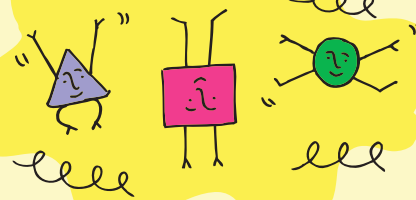


ACT AS IF WE OWN THE PLACE:
KEY LOCAL ISSUES

ACTIVE TRANSPORT



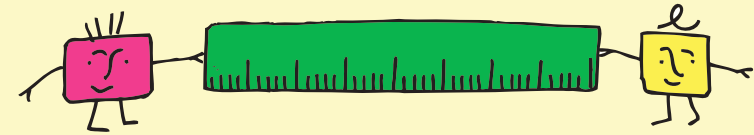
WALKING



CYCLING

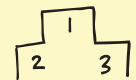
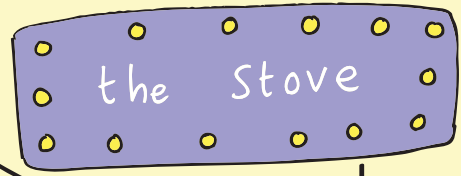
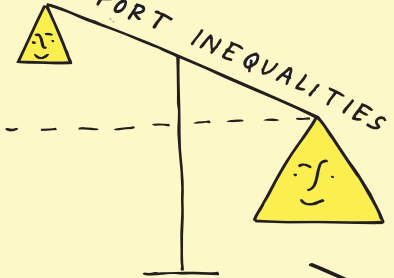


THORNHILL RAILWAY STATION

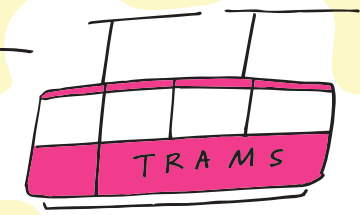


HOW DO WE MEASURE TRANSPORT?

TRANSPORT INEQUALITIES

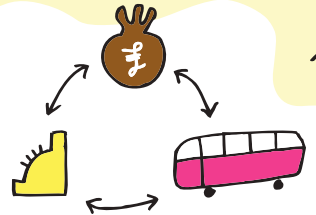


BETTER & FASTER

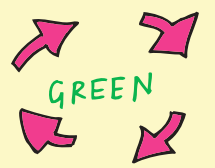


ACT AS IF WE OWN THE PLACE:
KEY LOCAL ISSUES

CONNECTING ENTERPRISE WITH TRANSPORT



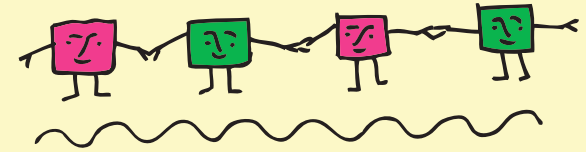
USING OUR



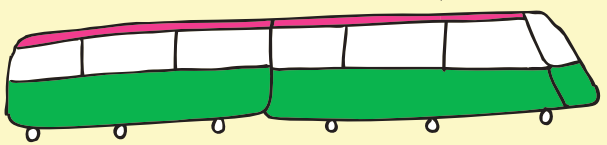
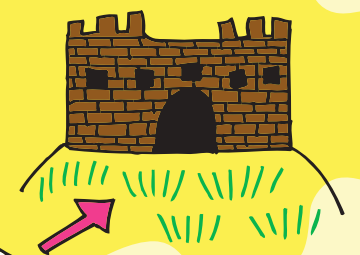
GREEN

RESOURCES

SPACE FOR PEOPLE

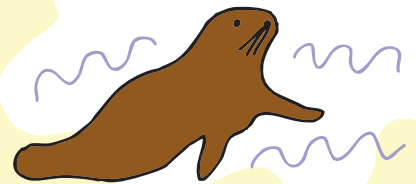


DIRECT TRAIN TO EDINBURGH

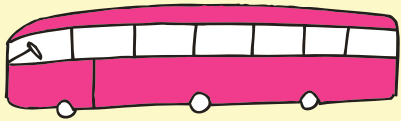


RAILWAY LINKS

SEA LION PARADOX

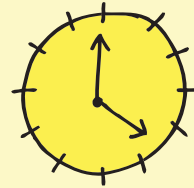
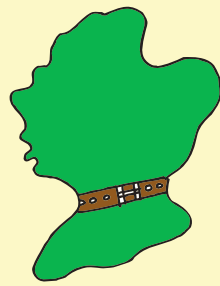


innovative solutions

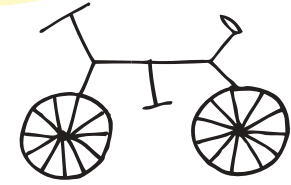


YOUNG PEOPLE

- > Priced out of driving
- > reliant on public transport
- > facing higher & higher fares

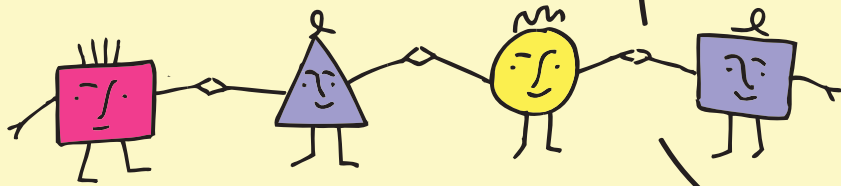


- 1 HR TO CENTRAL BELT
- > link Dumfries to Lockerbie
- > just over 1hr to get to central belt



CYCLING

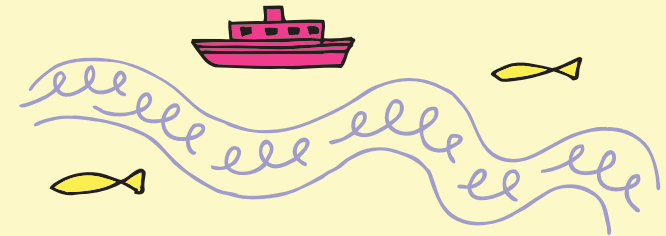
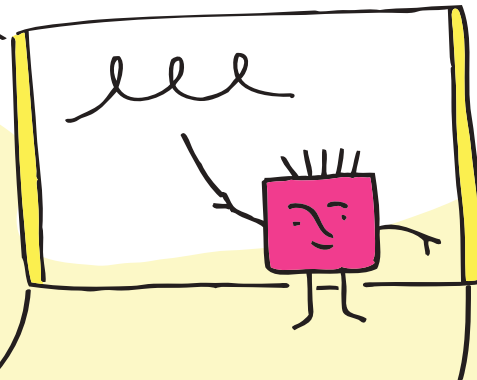
- > 1 in 5 D&G households do not have a car
- > we spend 11p for every km driven
- > health benefits & stronger communities



COMMUNITY TRANSPORT

- Community car schemes
- Shared services
- Demand Responsive Transport & Shop Mobility available on a limited basis via the Council

SPEAKERS



THE RIVER

- > Could trade come by river?
- > Personal transport by river?
- > link to West Coast



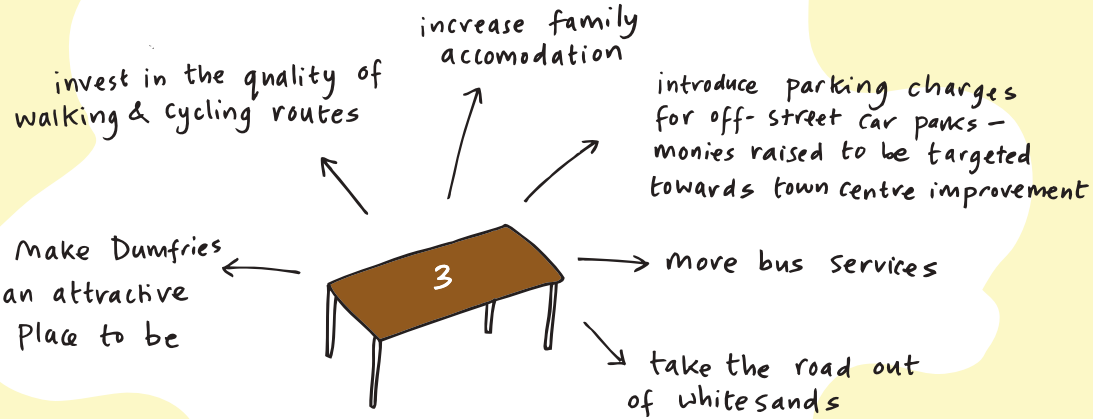
TRADE/ECONOMY

- > Tesco is the most successful retailer in D&G
- > 37,000 people visit M&S every week
- > folk can't get into the town centre with cars
- > 1500 extra parking spaces needed

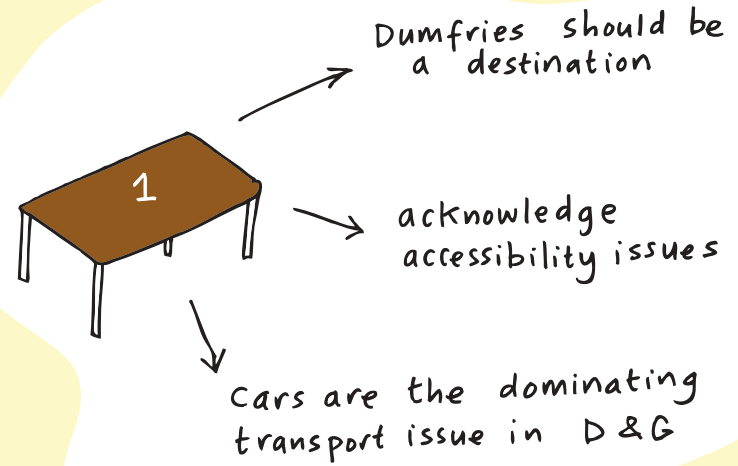
SUSTAINABLE TRANSPORT

- > reduce reliance on private cars
- > obesity is a national crisis
- > promote inclusivity
- > how do you adapt old towns to accommodate cars?

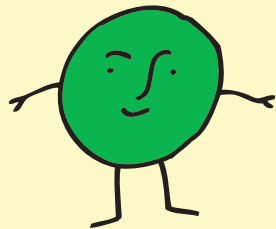




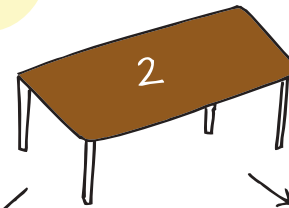
People have priority



SHARED FEEDBACK & ACTIONS GOING FORWARD



We need to spread the word and gain momentum about the Edinburgh/Glasgow rail link



We need a survey of available accomodation in Dumfries

approach Third Sector Dumfries and Galloway for funding